

December 24, 1937

1937  
**THE INLANDER**

Published Every Two Weeks for the Employees of Inland Manufacturing Division, General Motors Corporation, Dayton, Ohio

"OH, COME,  
ALL YE FAITHFUL"



Courtesy of Thomas Connair  
and Phyllis (Denlinger) Phillips

Christmas Greetings \* Views from Christmas Party \* Inland Children's Chorus \* Concert Press Comments

I wish at this year's end to express my appreciation to every member of the organization for what has been accomplished during the year 1937. Due to your efforts and the spirit of cooperation that exists at Inland, 1937 has been another year of progress.

I can promise each of you that nothing will be left undone by your management to continue this progress through 1938.

I wish you all a very Merry Christmas.

*W. S. Whittaker*  
General Manager



Above: Inland Children's Chorus of 100 voices featured Inland Christmas Party ... Director, Richard Westbrock; Accompanists, Mary Werner and Urban Deger



Arriving at the Party



Mother Brings the Kiddies to the Party



Jesse Miller (Machine Dept.) and his family group enter Memorial Hall to attend the Party

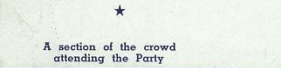


At Hall Entrance ... Each Guest received a program

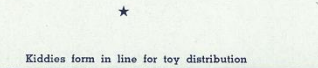


Patiently awaiting Santa Claus

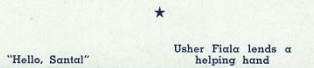
**Press Comments**  
**Inland Children's Chorus**  
By VIRGINIA D. STURM—Dayton News  
Prolonged applause marked the end of each number sung by the Inland Children's chorus Tuesday night in Memorial hall, when the annual joint concert between this group and the Dayton Philharmonic orchestra was presented to an almost capacity audience.  
Wallace Whittaker, president of the Inland company, has occasioned the proper and fitting establishment of this chorus made up of the children of Inland employes, provided an excellent young director for them, Richard Westbrock; one of the best accompanists, Mary Werner; and an expert in staging and lighting, Raymond Sovey, of New York. The result is a finished performance by 100 sweet-voiced youngsters, who sing with a better command of diction, phrasing, attacks, and recesses than any other choral group in the city.



A section of the crowd attending the Party



Kiddies form in line for toy distribution



"Hello, Santa!"



During the toy distribution



Usher Fiala lends a helping hand

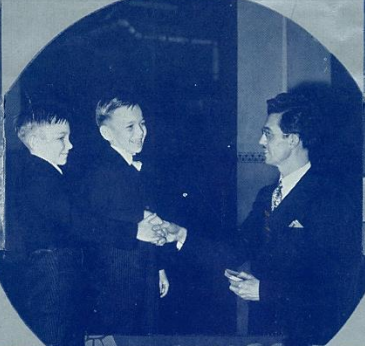


**Press Comments**  
**Inland Children's Chorus**  
By A. S. KANY—Dayton Herald  
Christmas came to more than 2,000 Daytonians in the most beautiful fashion imaginable Tuesday night. Not the make-believe Santa Claus sort of stuff, but the real McCoy, though the shining faces and joyous voices of 100 children as they sang softly and sweetly the divine strains of "Silent Night, Holy Night" from the tiered platform on which they stood in Memorial hall.  
The occasion was the third concert of the Dayton Philharmonic orchestra for this season, but the splendid as they were in the performance of their task, no had to take second place—and, no doubt, they did it willingly—to the Inland children's chorus.

**MORE CHRISTMAS PARTY VIEWS**  
"Congratulations, lad!"... Director Richard Westbrook to Richard Norris and Thomas Connair, diminutive members of Inland Children's Chorus



The Koonz triplets attend the Party with Father, Mother, Brother and Sister



Some members of chorus enjoy bit of relaxation between shows



Intently examining their new treasures... gifts from Santa Claus at the Party

"Please take our picture," urged these members of chorus when approached between shows



**THANKS A MILLION**

These brief words aptly imply the sincere appreciation of the Inland Management for the fine manner in which each person, connected with the staging of the Inland Christmas Party this year, performed his duties.

Each year approximately 350 people offer their services to the Party Committee in order that Inland employes may enjoy the annual Christmas Parties.  
Their services are greatly appreciated.



Ushers assist mother and one of youngest children to attend Party



**10,000 ATTEND PARTY**

Approximately 10,000 children and their fathers and mothers attended the annual Christmas Party held at Memorial Hall last Sunday, December 19th.

Of this number 3150 attended the first show held at 12:00 o'clock, 3530 the second show at 3:30 o'clock and 3300 were present at the last show at 7:30 o'clock.

Each year the number of persons participating in our Christmas Party grows larger.

★  
CHRISTMAS ISSUE  
THE INLANDER  
December 24, 1937  
Vol. 3—No. 2  
★



Below: Usher George Newland says, "The refreshments were fine." Others heartily agree



Above: Replenishing candy supply between shows... Messrs. Haynes and Disinger



Below: Construction goes on as assistant carpenter foreman, Joe Schell, looks on

Mr. Sylvan Connair (Plant Engineering) and Mr. Raymond Sovey of New York, who staged performance of our chorus are shown above



Discussing the stage setting are Mr. Sylvan Connair (Plant Engineering) and Mr. Leslie Snyder (Personnel Department)